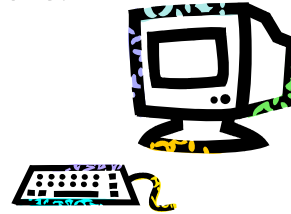
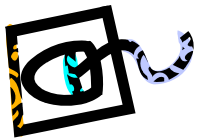


**We Want Your High Tech Business!**

**Professional Liability, Business Owners, Workers  
Compensation, and More!**



Computer Services  
Computer Programming Services  
Computer System Designers & Consultants  
Data Systems Consultants & Designers  
Computer Graphics  
Computer Software Pre-packaged  
Prepackaged Software Development  
Systems Software Development Services  
Systems Integration Services  
Cad Systems & Services No Manufacturing  
Computer Aided System Services  
Computers Multimedia  
Web Site Design Service  
Data Processing Service  
Internet Home Page Development Consulting - No Web Hosting  
Computers Service & Repair  
Computer Related Maintenance Services  
Computer Related Consulting Services  
Computers Networking  
Computer Consultants  
Computer Related Services NEC



\*not all eligible classes are listed: call your underwriter for details.

877-438-7369  
610-313-8617 (Fax)  
[www.pen-ex.com](http://www.pen-ex.com)

# Technology Choice Endorsement

## Superior Flexibility

Your business isn't the same as the one next door, so why should your insurance program be the same? Technology Choice Endorsement allows you to easily customize your insurance to your business needs by combining the most common options under one endorsement.

## Broad Coverage, Easy Choice

Technology Choice Endorsement provides the wide range of coverage limits listed below at a nominal price. Additionally, increased limits may be available for an even more customized solution.

## Property Coverages Included

Accounts Receivable	\$100,000 at each designated premises
	\$100,000 in transit or at a premises other than the described premises
Brands or Labels	\$25,000
Business Income and Extra Expense - Dependent Property	\$100,000
Business Income and Extra Expense - Newly Acquired Premises	\$500,000
Business Income Billable Hours Option	\$100,000
Claim Data Expense	\$10,000
Computer Fraud	\$5,000
Electronic Data Processing Equipment	\$50,000, including off-premises exposure
Extended Business Income and Extra Expense	90 Days
Limited Building Coverage - Tenant Obligation	\$5,000
Lost Key Consequential Loss	\$500 per premises
Newly Acquired or Constructed Property for Business Personal Property	\$500,000
Ordinance or Law	\$25,000 including Tenants Improvements or Betterments
Ordinance or Law - Increased Period of Restoration	\$50,000
Outdoor Trees, Shrubs, Plants and Lawns	\$5,000
Unauthorized Business Card Use	\$5,000
Utility Services - Direct Damage	\$25,000
Utility Services - Time Element	\$25,000
Valuable Papers & Records	\$100,000 at each designated premises
	\$100,000 in transit or at a premises other than the described premises

## Key Coverage Definitions

**Accounts Receivable** — Covers the reconstruction and reimbursement of uncollectible money from your customers due to a covered cause of loss.

**Business Income Billable Hours Option** — Provides an alternative valuation for short-term losses, reimbursing you for your lost time, even if clients are rescheduled.

**Unauthorized Business Card Use** — Provides up to \$5,000 reimbursement in the event your business' credit or debit cards are fraudulently used.

**Lost Key Consequential Loss** — Provides up to \$500 per premises for replacement of locks and keys in the event a key is accidentally lost.

**Business Income and Extra Expense – Dependent Property** — Provides up to \$100,000 in the event that your business income is reduced due to a critical supplier or customer's property.

**Utility Services – Direct Damage** — Pays for direct physical loss or damage to covered property caused by an interruption of electrical power, communications, or water supply services not located on the described premises.